

# Epson Artisan 1430 Setup for PC

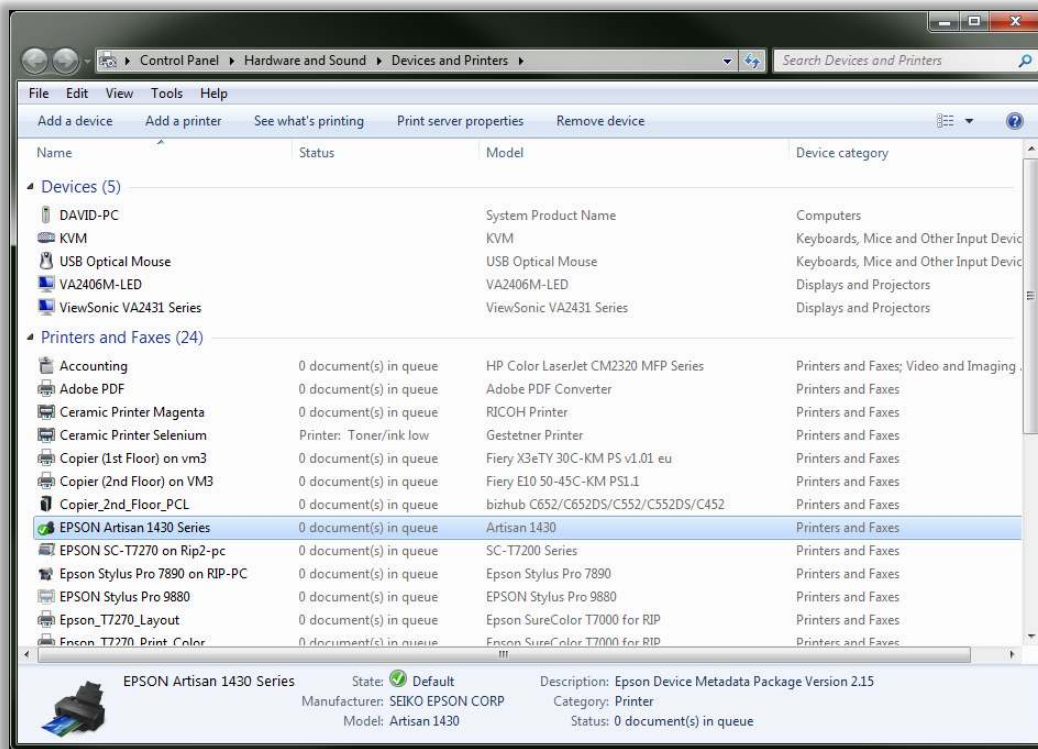
## Printer and Driver Install:

- Follow the “Start Here” instructions included with the printer
- Once you get to step “5 Install software” go here to download the latest driver: <http://www.epson.com/cgi-bin/Store/support/SupportIndex.jsp>
- Search for “Artisan 1430” then, click the link then, click “Downloads & Drivers”
- Under "Drivers" download the Printer Driver, not the combo package
- Make sure the printer is **not** connected to your computer and run the installer
- During the installer you will setup either Wi-Fi or USB connection to the printer
- Complete the installer then, load paper and print a test page to verify connection

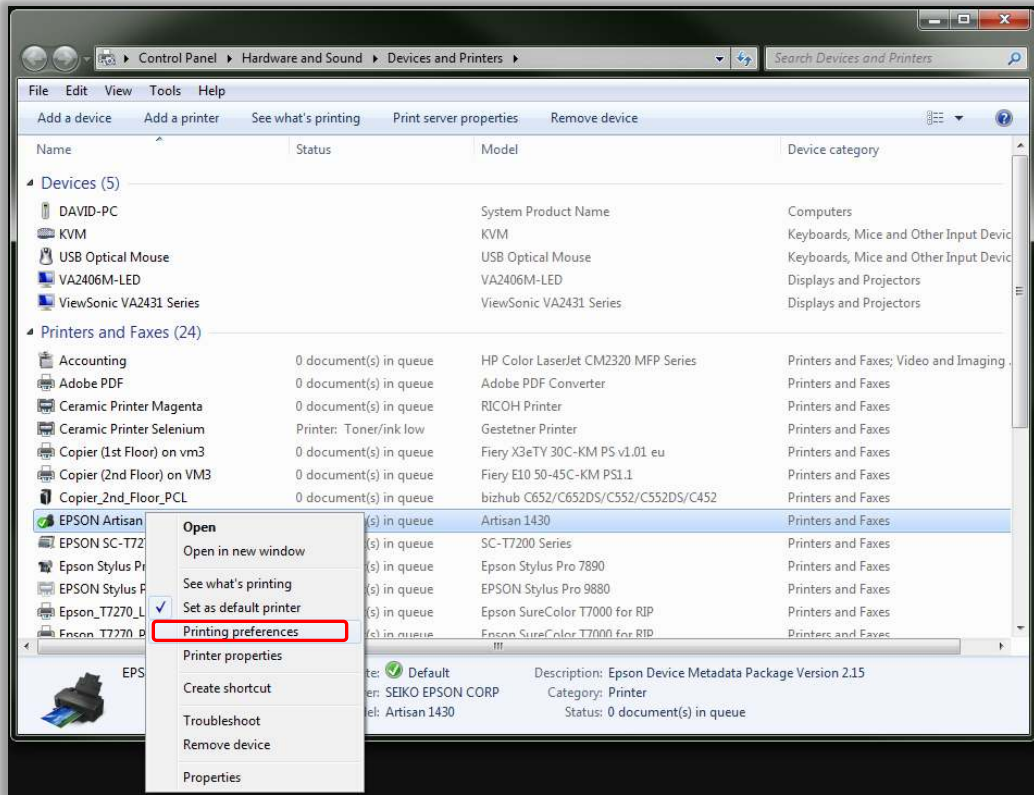
## Epson Driver Settings:

The following steps demonstrate how to set the optimal Epson driver settings for using Rayzist Inkjet Film. The last steps save these settings as a preset and use them as the default driver settings.

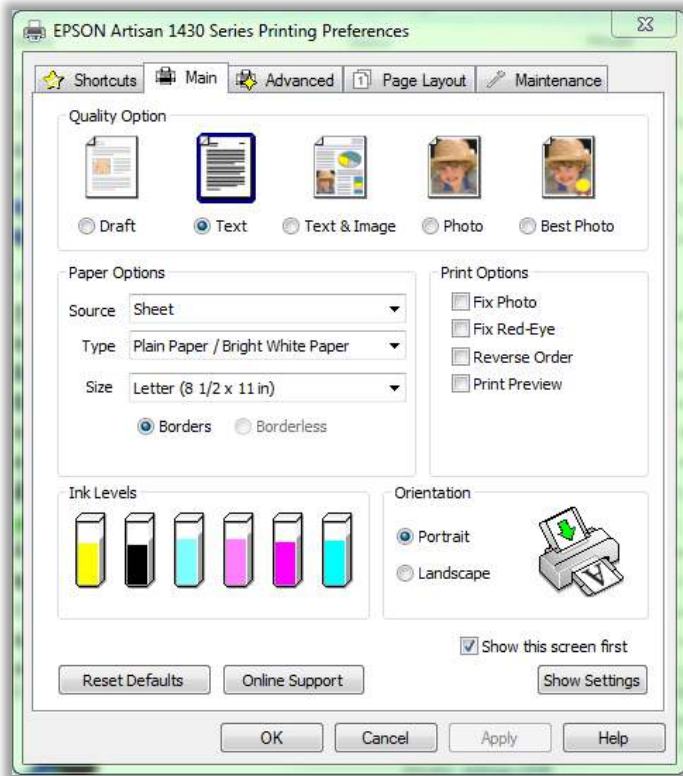
- Open Start, then Devices and Printers (also located in Control Panel)



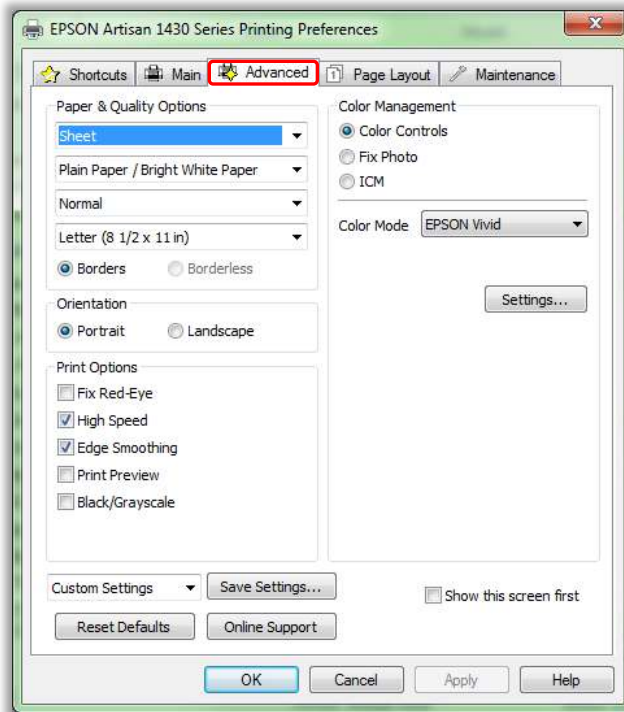
- Select the Epson Artisan 1430 and right click and choose "Printing Preferences"



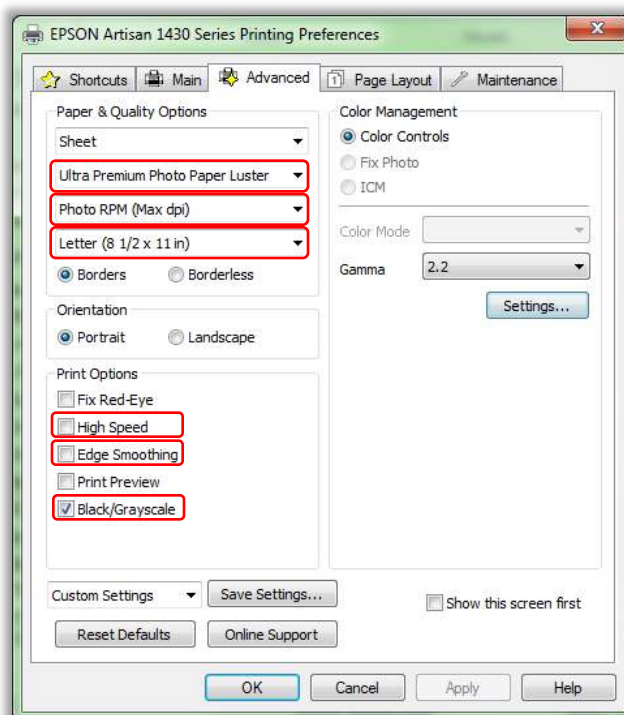
- This is where the Epson driver settings are set



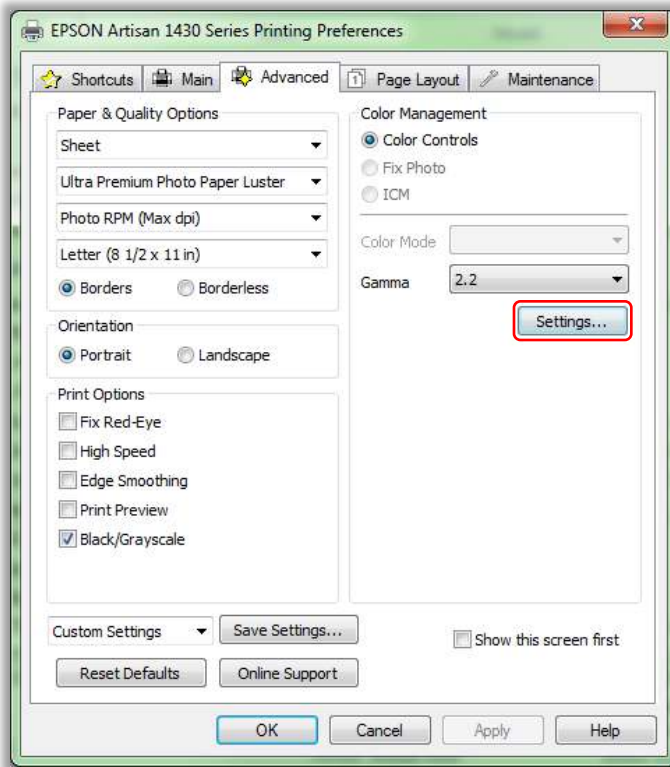
- Click the Advanced tab



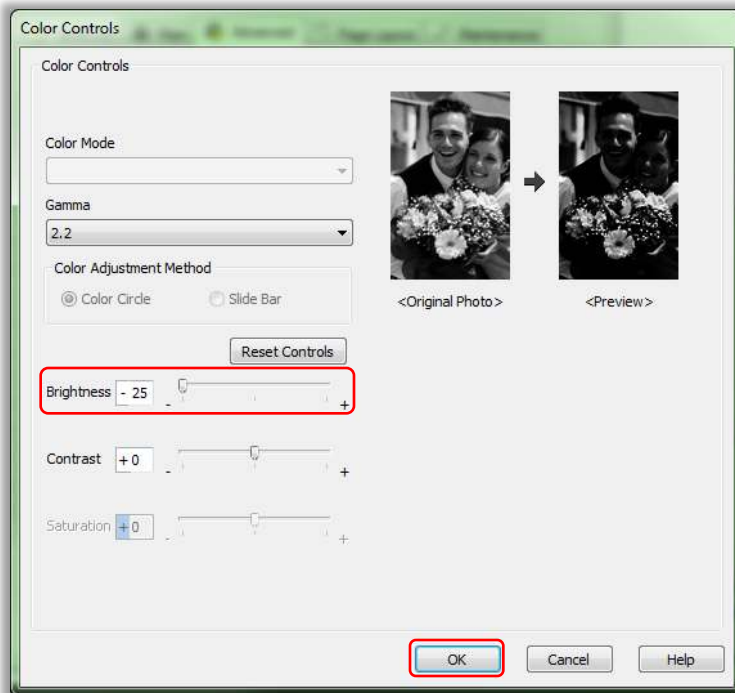
- Set the following:
  - Media Type: Ultra Premium Photo Paper Luster
  - Print Quality: Photo RPM (Max dpi)
  - Size: Set your appropriate sheet size (Letter, Legal, Tabloid)
  - In the "Print Options" section: Uncheck everything except "Black/Grayscale"



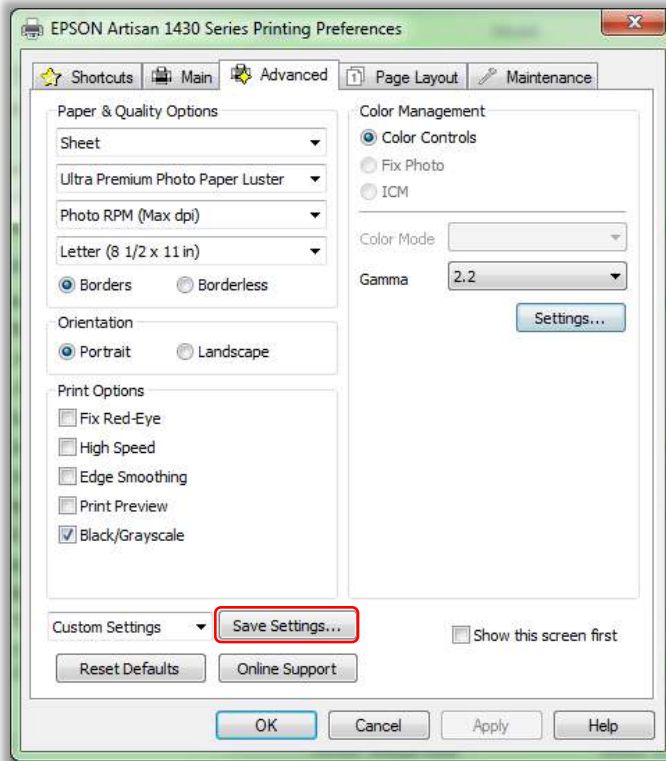
- Now click the button "Settings..."



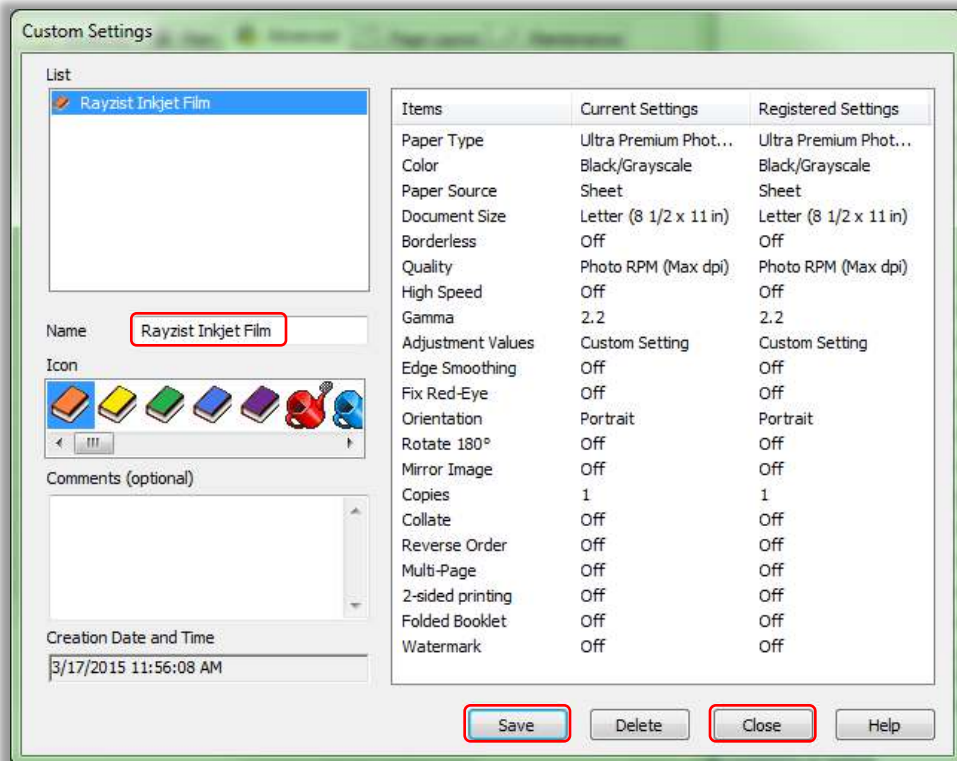
- In Color Controls, drag the Brightness slider left to the max (-25) then, click OK



- Now click the button "Save Settings..."

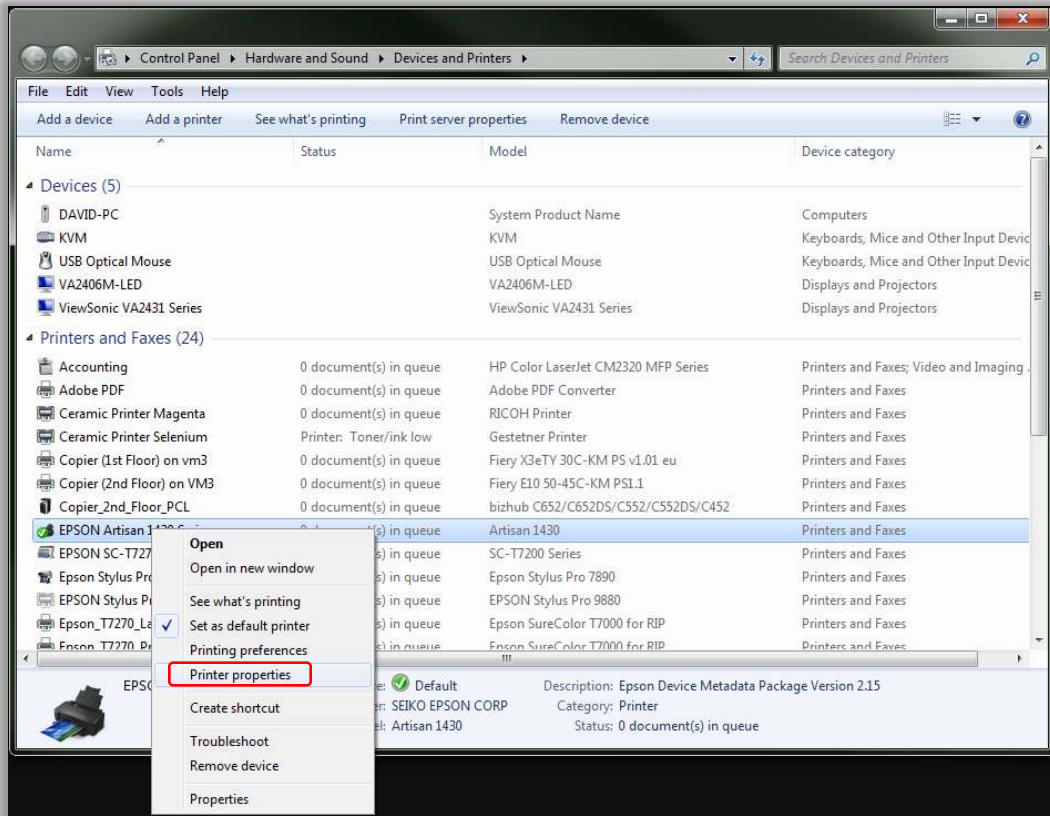


- Name the preset then, click Save then, click Close

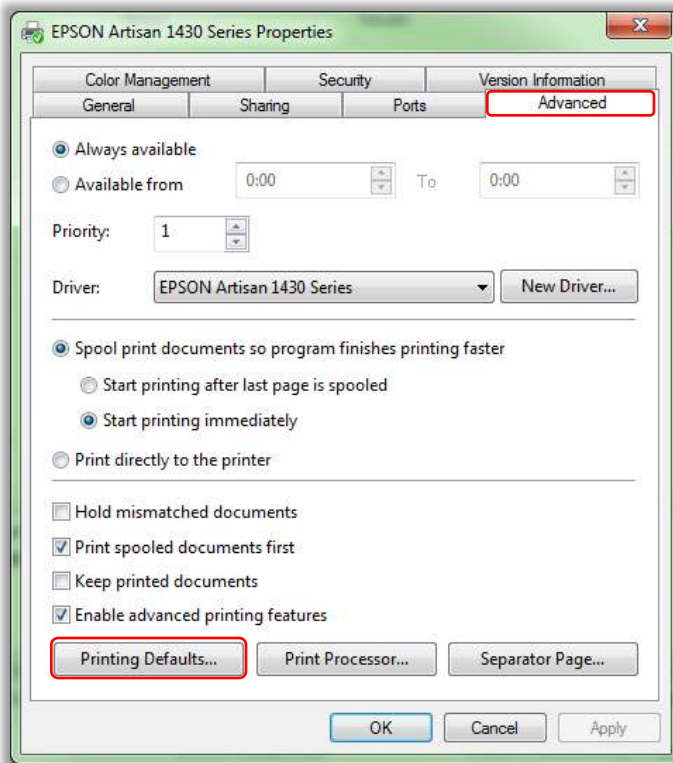


- Click OK in the Preferences window

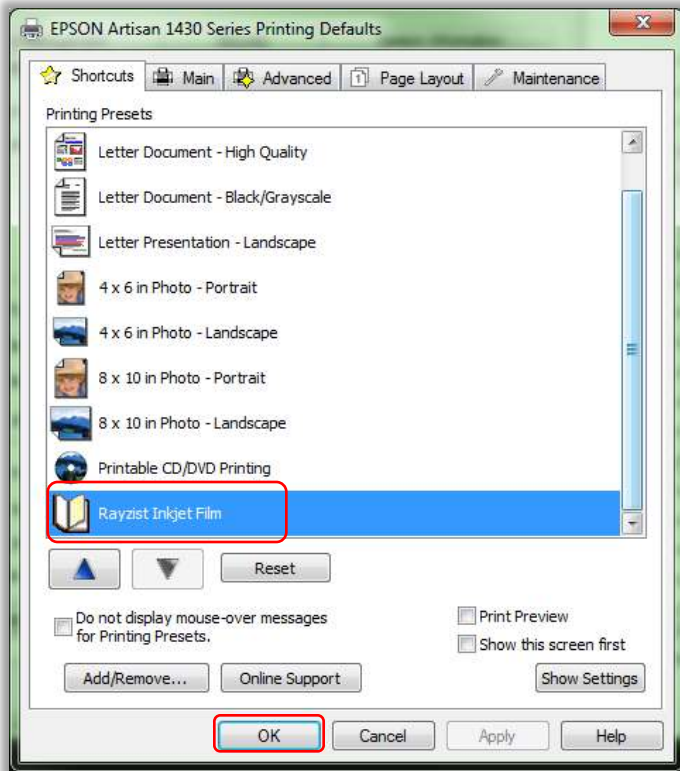
- Now right click again on the Epson Artisan 1430 and choose "Printer properties"



- Select the "Advanced" tab then, click "Printing Defaults..."



- In this window, simply select the named preset you just saved then, click OK



- Now these settings are saved as the default settings for every application